



FLUSH BOLTS

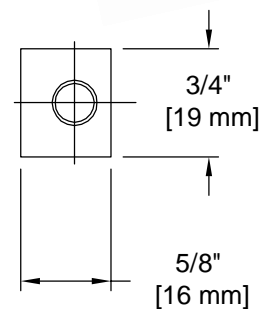
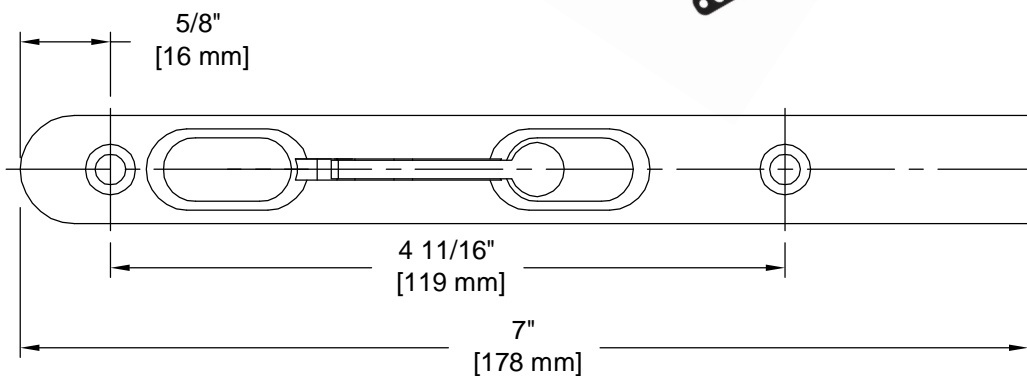
Flush Bolt, Radius Top, Lever Action



- Lever Operated Cam Mechanism
- Makes Bolt Throw and Retraction Much Easier Than Traditional Flush Bolts
- Body 7 in x 3/4 in
- Mounting Hardware: Two 1 1/2 in & Two 3/4 in Length Wood Screws Included



Material: Zinc Die Cast
Finish, Various
Includes, Mounting Screws



DISTRIBUTED BY ABS, CONTACT US TO LEARN MORE!

